

Your competent partner  
in oncology and hemostaseology.

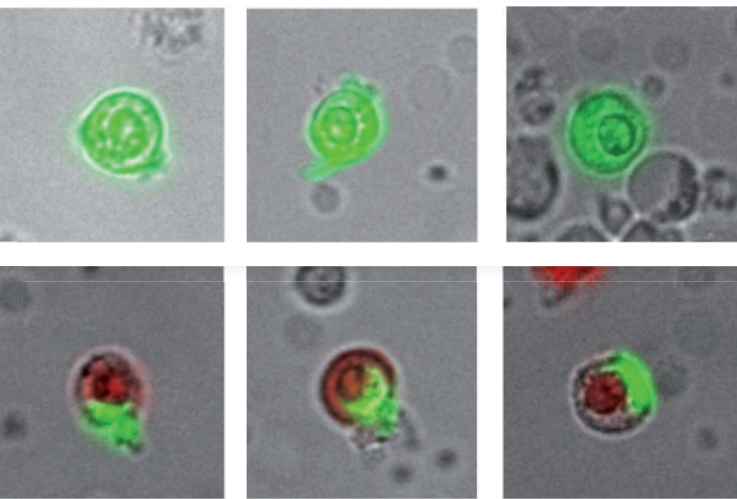
Does your therapy work?  
Are you at risk to suffer from relapse?

These are your key questions. Maintrac wants to help you to answer them.

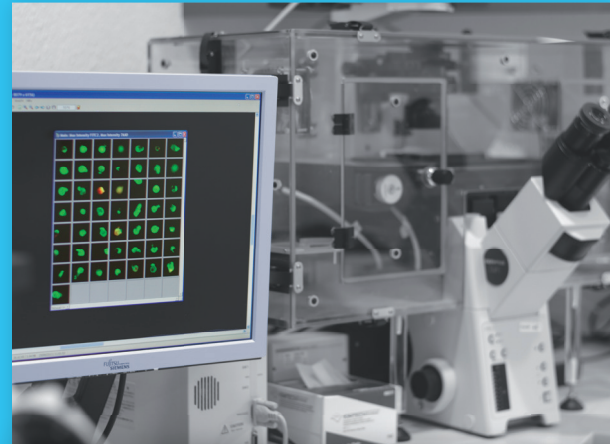
We need 15ml of blood from you.

maintrac has the following advantages:

- Early recognition of renewed tumor activity
- Control of the therapy
- Tailoring of the therapy
- Longtime monitoring after the end of therapy



Picture above:  
Living tumor cells are stained green in the blood test.  
Dead tumor cells will have an additional red staining.



Specialized Immunology  
Research and Development GmbH

In association with  
Transfusion Medicine Center  
Bayreuth (TZB)

Kurpromenade 2  
95448 Bayreuth, Germany  
Phone: +49 (0) 921 730052  
mail@simfo.com  
www.simfo.com

Specialized Medical Laboratory  
Dr. Pachmann

Kurpromenade 2  
95448 Bayreuth, Germany  
Phone: +49 (0) 921 850200

Since 2005, maintrac is performed by the DIN  
EN ISO 15189 accredited specialized medical  
laboratory Dr. Pachmann.

# maintrac



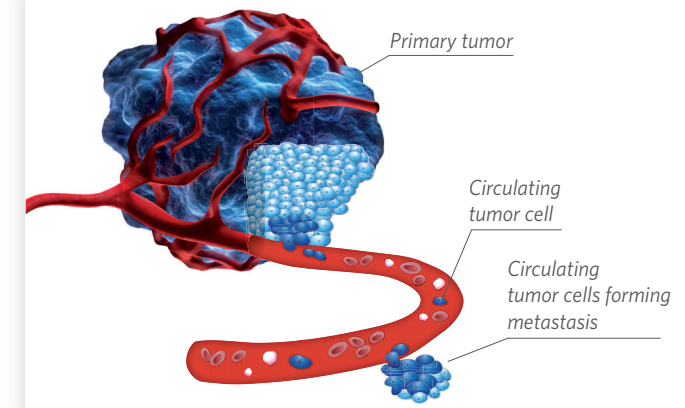
maintrac guides you through  
cancer therapy.

# maintrac

maintrac diagnostics - prior, during and  
after cancer therapy.

Each cancer is different and treatment effectiveness can vary.  
Therefore, it is important to monitor the success of the therapies  
applied to you.

**Cancer releases tumor cells - circulating tumor cells - into  
the blood.** Even years after surgery or therapy tumor cells can still  
be present in the blood. The tumor cells are able to change during  
the course of disease. These cells can be responsible for recurrence  
of the cancer. Early detection of these changes allows you to  
receive the right therapy at the right time.



**maintrac** is a highly sensitive diagnostic method based on  
circulating tumor cells. It allows a direct glance at tumor activity.

**maintrac** can test different drugs directly on circulating tumor  
cells before therapy. This yields information about the therapy  
effectiveness in advance.

**maintrac** permits the identification of therapy-relevant properties  
of the tumor cells. Tailoring of the therapy is possible at any time.

**maintrac** uses circulating tumor cells to monitor the therapy and  
the follow up in order to early track any changes.

## maintrac – Monitoring tumor activity.

**Is it possible to determine whether your treatment is or was successful?**

Maintrac can detect tumor activity based on increasing numbers of tumor cells in the blood, usually sooner than other methods.

Maintrac is an additional tool for your physician to regularly monitor your tumor activity (every 3 - 6 Months).

**In case of increasing cell numbers, the cancer therapy be modified.**

## maintrac – testing of drugs.

**Which substances will work for you?**

The daily dose of possible substances will be applied to your blood sample to provide you and your physician a decision making tool.

Either common medications or alternative remedies can be tested.

**Determination of the efficacy is possible before the treatment starts.**

## maintrac – therapy-relevant properties of the tumor cells.

**Will a certain therapy be helpful?**

A number of therapies should be only applied when the tumor cells comprise corresponding features. Especially in later stages of the treatment therapy-relevant properties of the tumor cells can change.

For example, this applies to the presence of important proteins, hormone receptors, immune regulators or HER2/neu amplification which play a role in breast cancer patients.

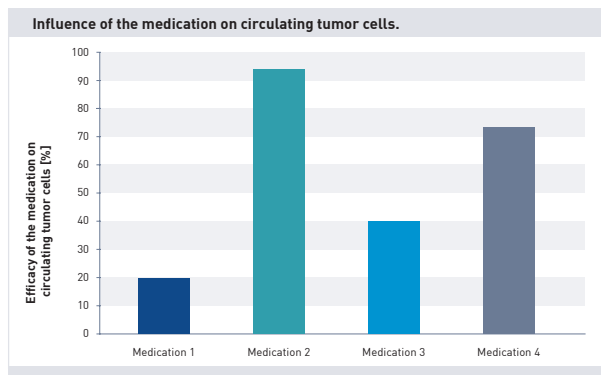
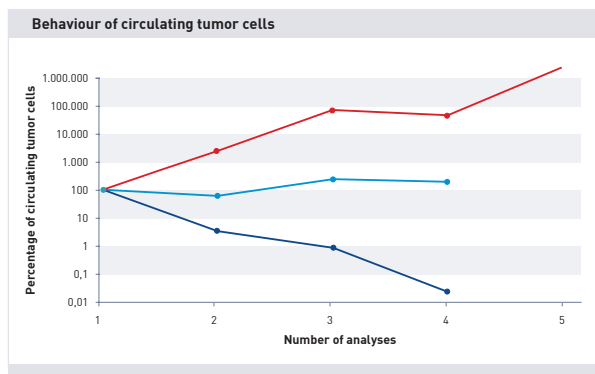
maintrac always considers the actual situation of the patient.

**With maintrac it is possible to characterize the currently present circulating tumor cells to find an appropriate therapy.**

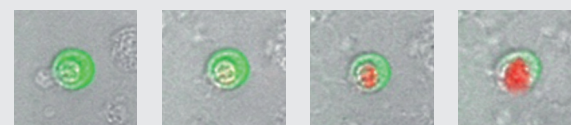
## maintrac – maintenance therapy in breast and prostate cancer.

**Is the implementation and continuation of an endocrine therapy useful?**

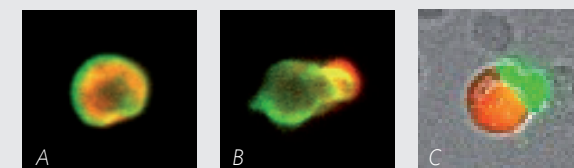
The continuation of an already 5 years lasting therapy is not always beneficial, i.e. with Tamoxifen. It can be checked with maintrac whether you benefit from further treatment.



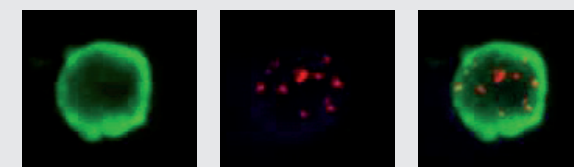
Medication 4 shows the highest efficacy in this blood sample. The chance for a sustainable and successful therapy is increasing.



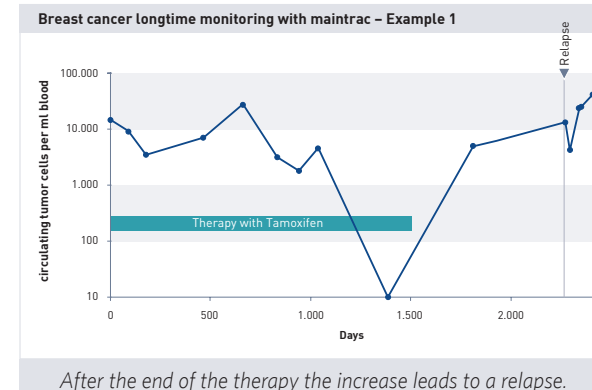
Example of a dying cell in the presence of a medication.



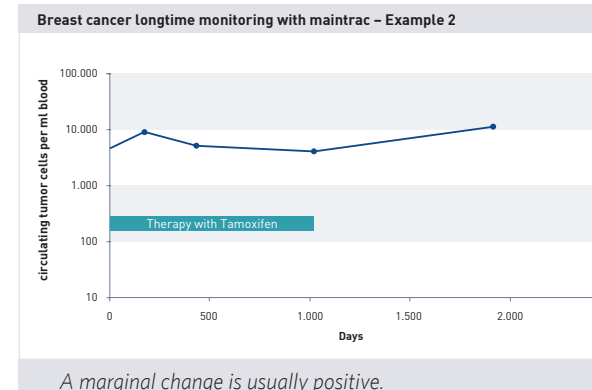
Circulating tumor cells expressing Ki67(A), PD-L1(B) or the estrogen receptor(C).



Circulating tumor cell that carries a HER2/neu amplification.



After the end of the therapy the increase leads to a relapse.



A marginal change is usually positive.

During the course of the disease the cell number will be tested repeatedly.

**Increasing cell numbers** = further diagnostics necessary and/or optimization of the therapy

**Cell number in steady state** = positive course of disease

**Decreasing cell numbers** = good prognosis / efficient therapy

Please talk about details and further procedures with your treating physician.

After finishing the therapy increasing circulating tumor cells can lead to reinitiation of the therapy.